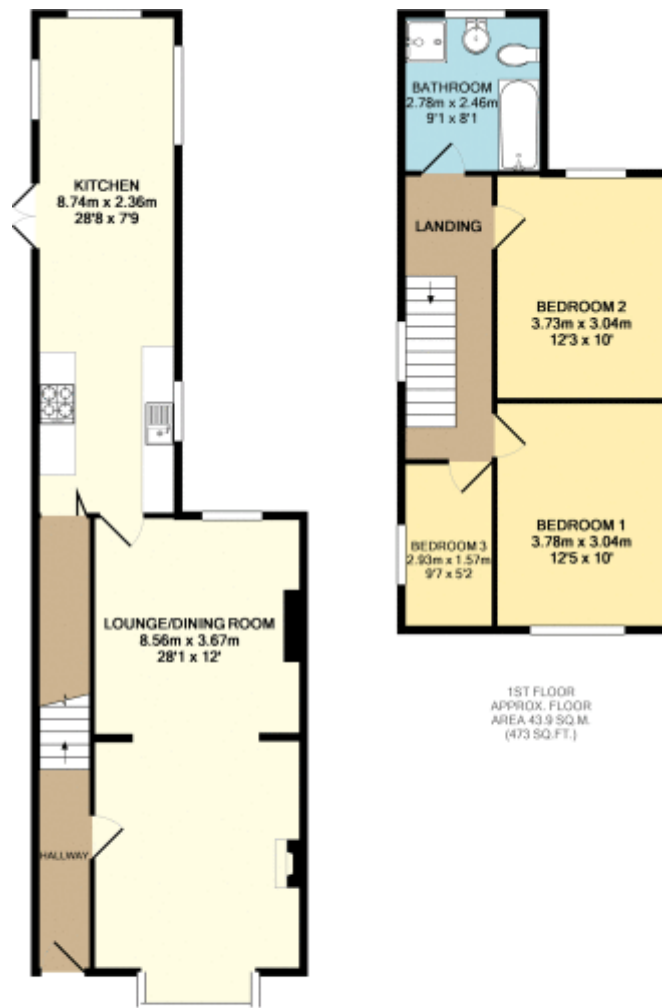


Floorplan for 3 bedroom semi-detached house for sale



GROUND FLOOR
APPROX. FLOOR
AREA 59.5 SQ.M.
(640 SQ.FT.)

1ST FLOOR
APPROX. FLOOR
AREA 43.9 SQ.M.
(473 SQ.FT.)

TOTAL APPROX. FLOOR AREA 103.4 SQ.M. (1113 SQ.FT.)

Whilst every attempt has been made to ensure the accuracy of the floor plan contained here, measurements of doors, windows, rooms and any other items are approximate and no responsibility is taken for any error, omission, or mis-statement. This plan is for illustrative purposes only and should be used as such by any prospective purchaser. The services, systems and appliances shown have not been tested and no guarantee as to their operability or efficiency can be given.
Made with Metropis 5/2019



To view this property or request more details, contact Purplebricks, covering Yorkshire

Suite 7, First Floor, Cranmore Drive, Shirley, Solihull, B90 4RZ

0121 396 0883 Local call rate

About Purplebricks, covering Yorkshire