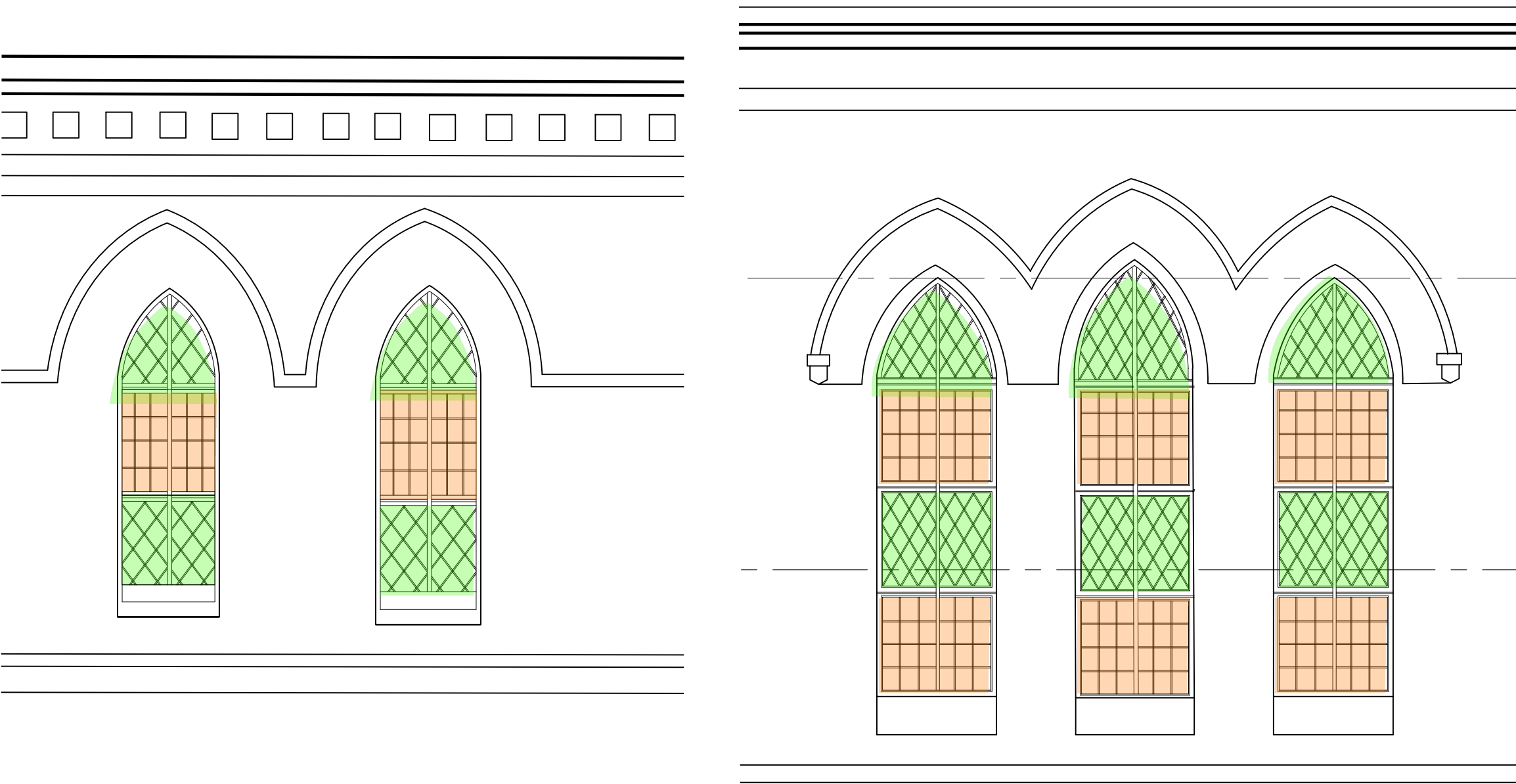




PROPOSED WINDOWS- high level

PROPOSED WINDOWS - Ground floor level

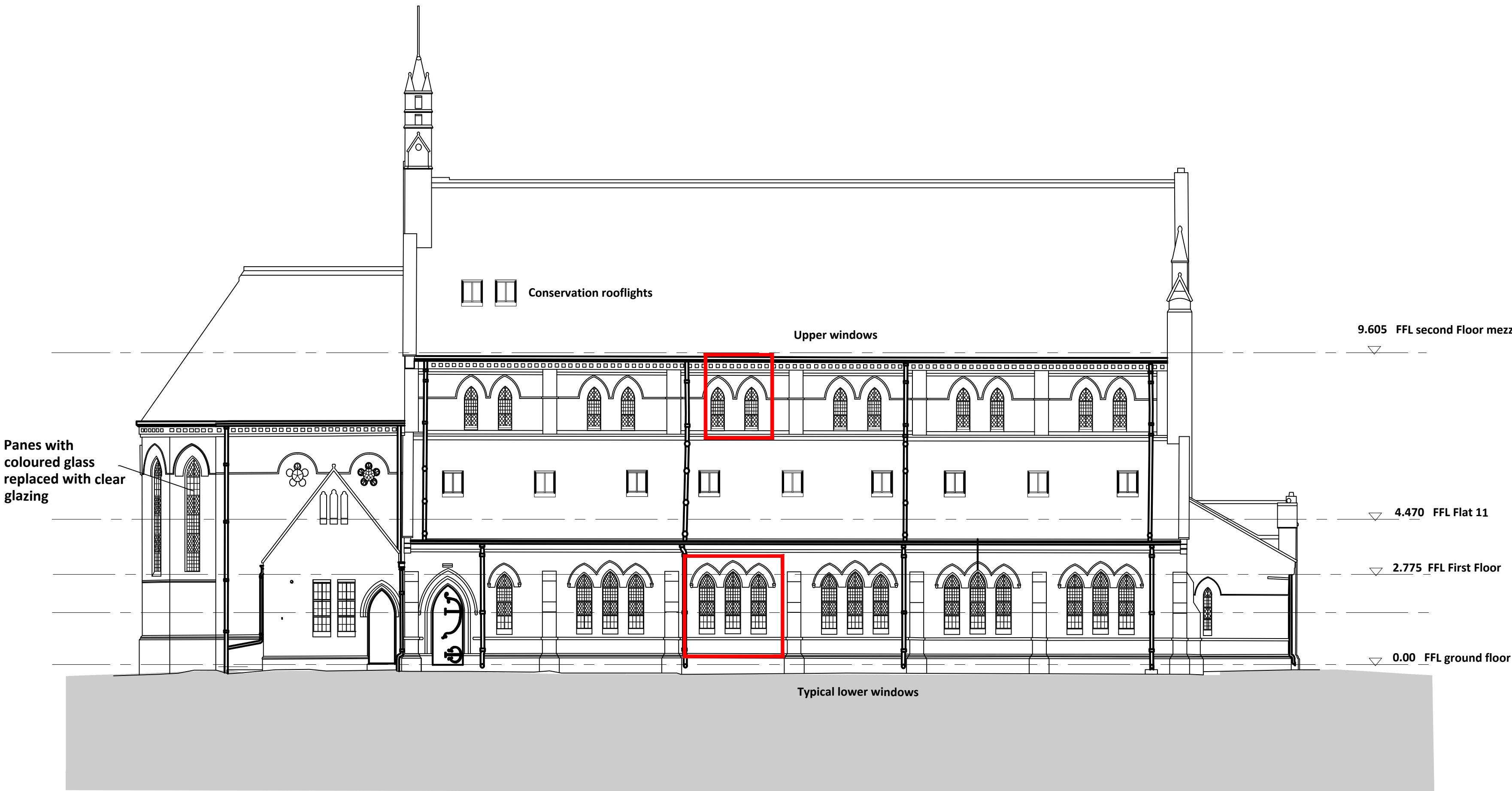


EXISTING WINDOWS-High level

EXISTING WINDOWS- ground floor level



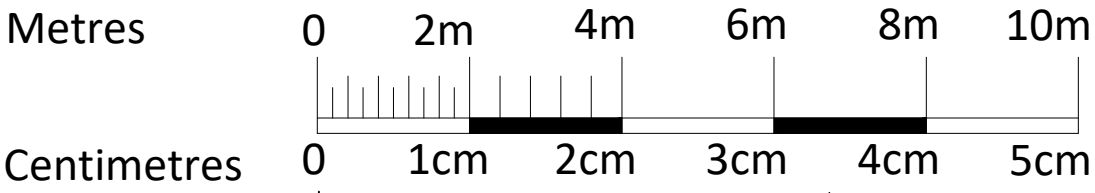
Hopper type opening light to habitable rooms to open inwards with bottom hinge. 1 no. hopper per window pair.





Typical existing window condition - the building has suffered from vandalism over the last few years since it has been vacant and many windows now require substantial repair/ restoration works.



Typical window hopper to allow ventilation to habitable rooms



PLANNING 1:200		
B	Window notes updated	19.06.2025
A	Windows and rooflights updated	26.02.2025
Revision	Description	Date
Project Church of St Luke Sedgfield		



Intersect

Architects Limited

YBN 7-8 Delta Bank Road
Metro Riverside Park
Gateshead NE11 9DJ. T. 0191 303 6283

Title Elevations- proposed

Scale	Date	Drawn by	Chckd by
1:200@A3	May 2024	jkb	ajs

Dwg. No. SP-384/A-PL-15 / B

© Intersect Architects Limited.
This drawing is copyright and must not be reproduced wholly or in part without prior permission.
Do not scale from this drawing.