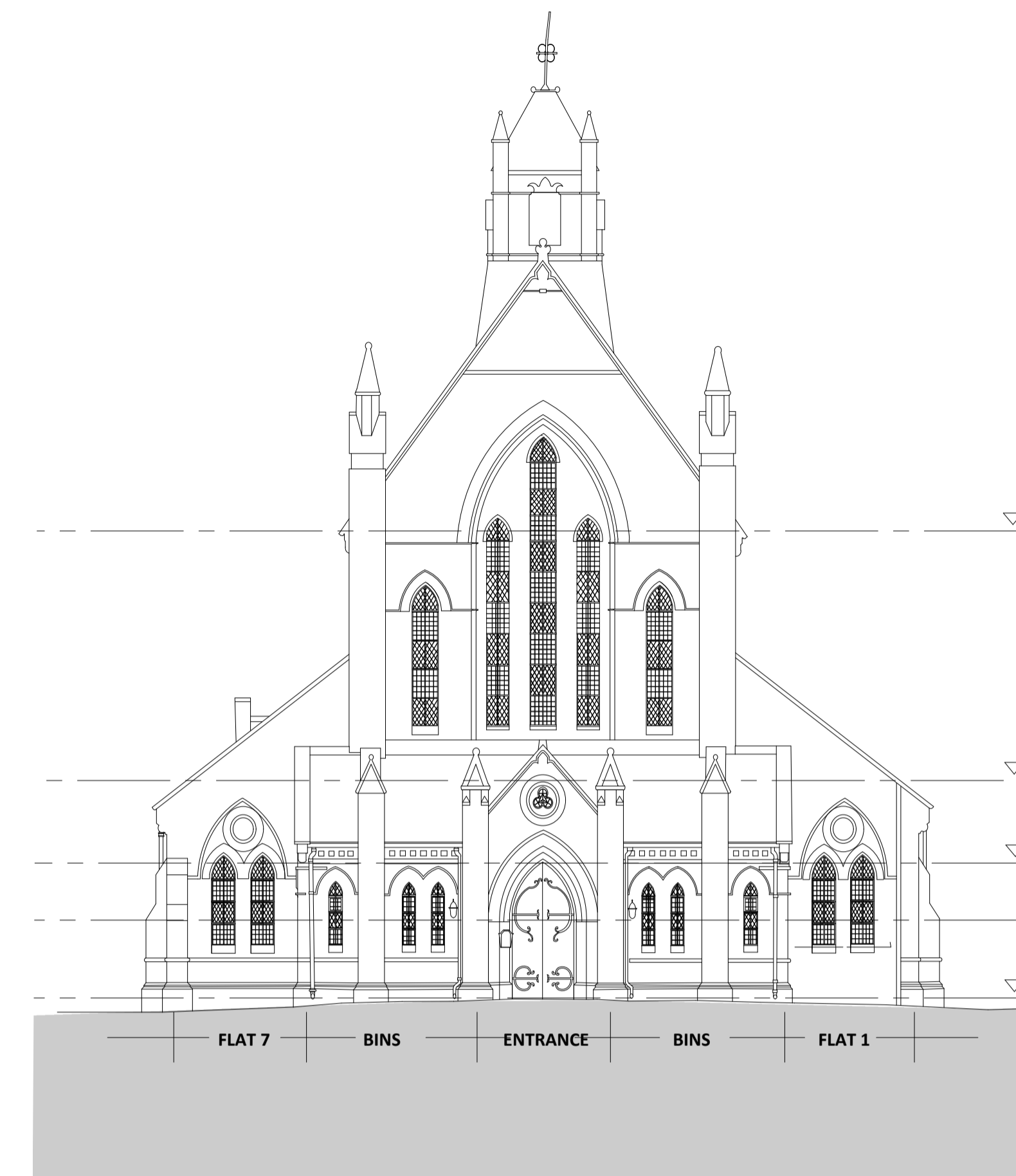
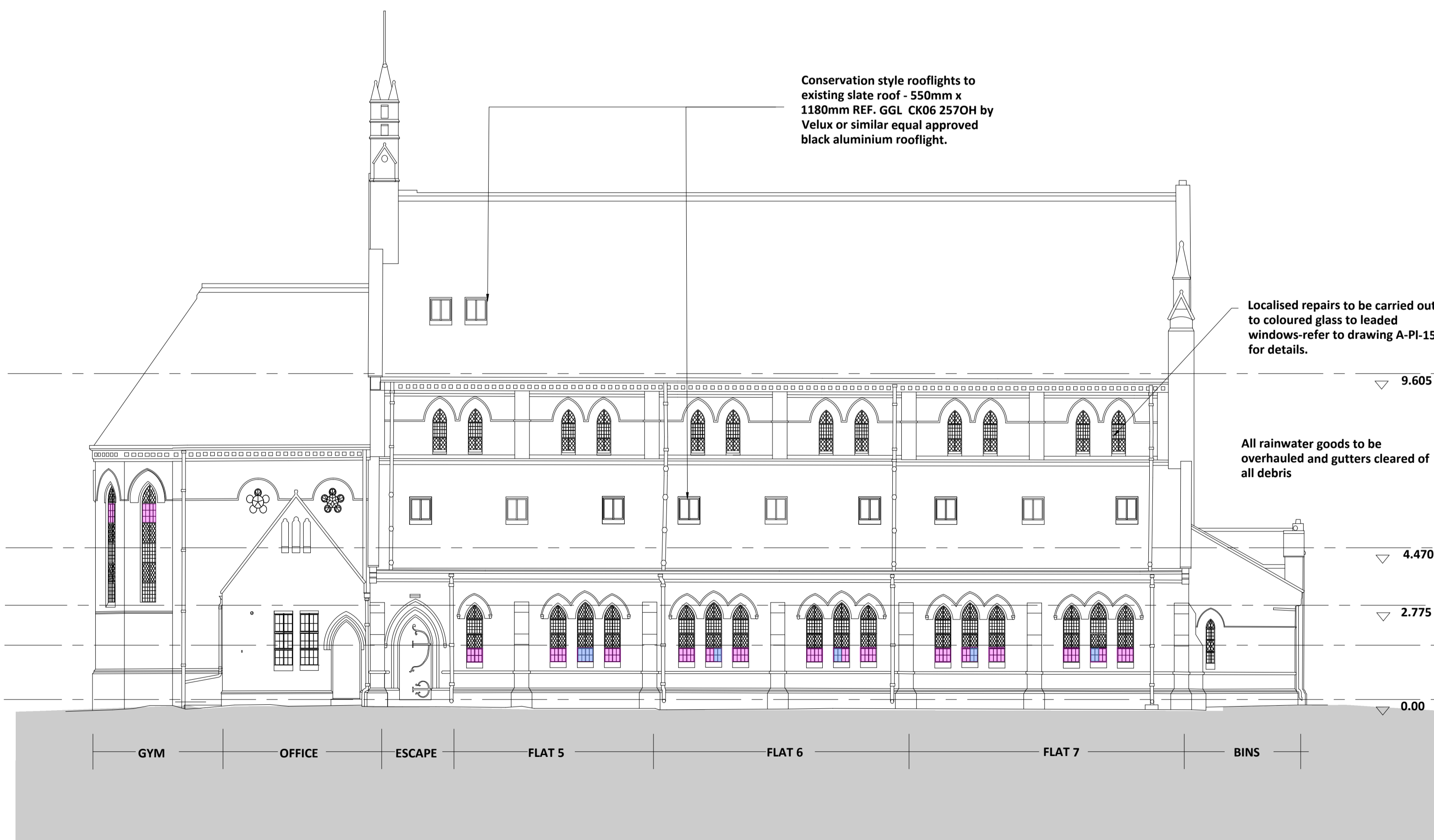


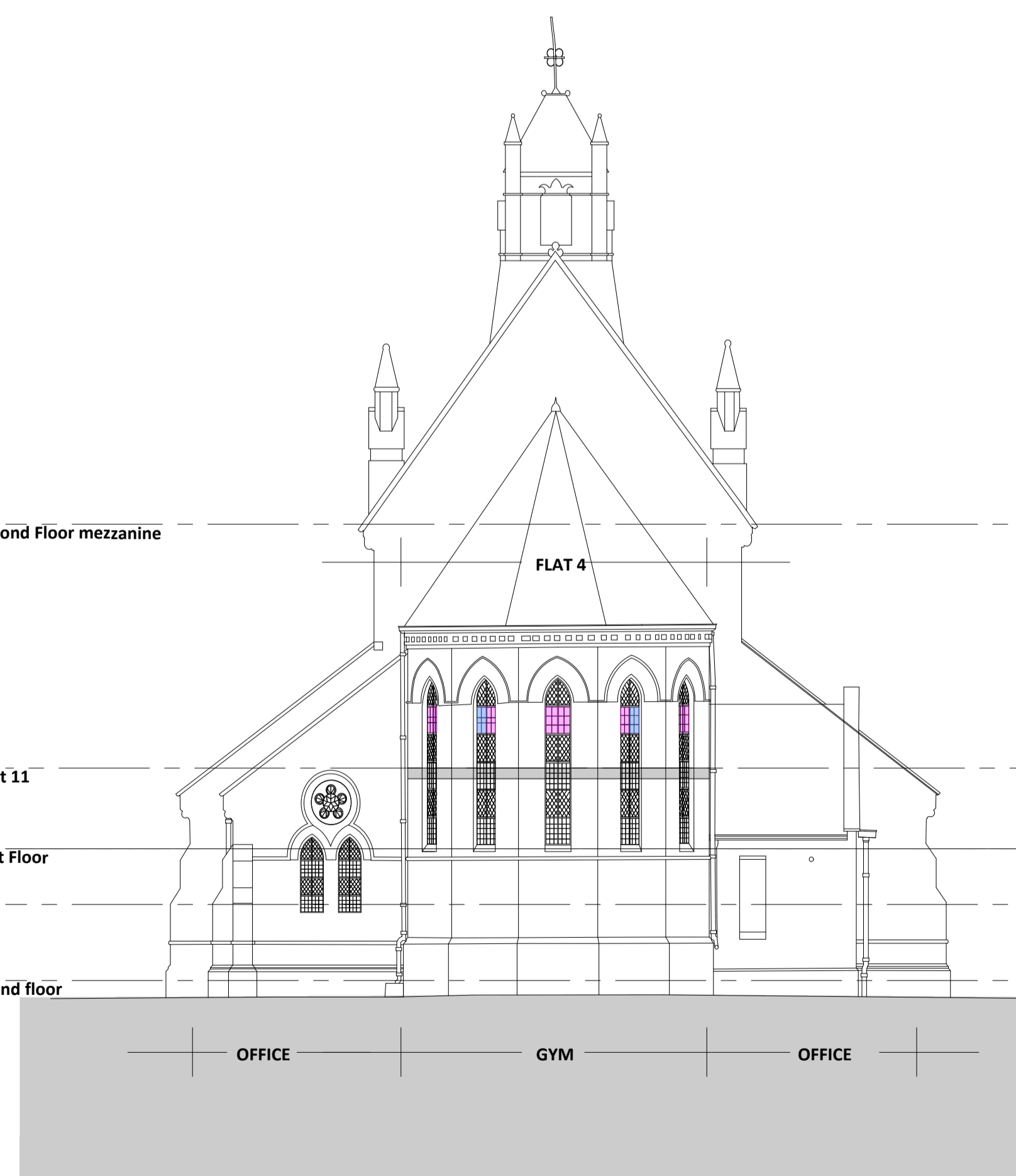
NORTH ELEVATION



EAST ELEVATION



SOUTH ELEVATION

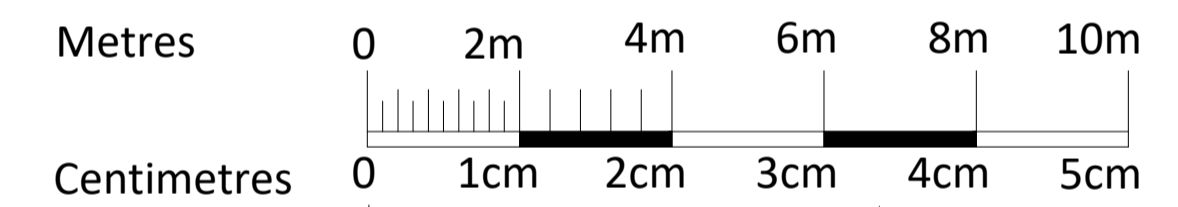


WEST ELEVATION

- WINDOWS TO BE REPLACED WITH CLEAR GLASS AS DETAIL ON DRAWING 15
- WINDOW HOPPER OPENING LIGHT TO BE PROVIDED-refer to dwg. no. 15 for details

All windows not shaded to have localised repairs only retaining existing frames and glass where possible. Many of the windows have been subject to vandalism, particularly at ground floor (though not limited to this) with both the lattice leaded glazing and frames damaged to many windows. A quotation to carry out the repairs and restorative works has been prepared by The Stained Glass Shop, Middlesbrough. Works to consist of:
 Repair stained glass windows across every window in the church.
 93 sections of glass to be repaired or replaced with clear leaded glass
 18 stainless steel openers
 104 glass insitu repairs

All work to be traditional stained-glass method every section is individual. Glass to match the original and where possible one set of windows will have new glass and salvaged glass to be used in repairs. Metal frames to be drop open onto stays.



PLANNING 1:200

Revision	Description	Date
F	Window annotation updated	19.06.25
E	Window annotation added	26.02.25
D	Refuse stores removed	13.02.25
C	Rooflight positions updated and ASHP enclosures removed	22.01.25
B	Rooflight positions updated and refuse / ASHP enclosures added	05.12.24
A	Velux spec. added for rooflights	13.09.24

Project Church of St Luke Sedgefield



Intersect
 Architects Limited

YBN 7-8 Delta Bank Road
 Metro Riverside Park
 Gateshead NE11 9DJ. T. 0191 303 6283

Title Elevations- proposed

Scale	Date	Drawn by	Chkd by
1:200@A3	May 2024	jkb	ajs

Dwg. No. SP-384/A-PL-13 /F