



Porchester Terrace, London W2

Porchester Terrace, London W2

Enter into a wide hallway with ample storage, this hallway divides the property with the reception to the front and the living areas to the rear.

The reception is a nice spacious room with ample room for dining and entertaining while also giving access to a private balcony. The kitchen features lots of worktop space, breakfast bar and integrated appliances.

The two bedrooms are of equal size and benefit from fitted storage, while the principal suite offers an en suite bathroom. There is also a contemporary tiled shower room.



Guide price

£1,150,000

Tenure

Leasehold:
approximately 50
years remaining

Local authority

City of
Westminster

This two bedroom apartment is arranged on the third floor of a residential building located moments from Hyde Park. The apartment has outside space with views towards Hyde Park and building Porter.



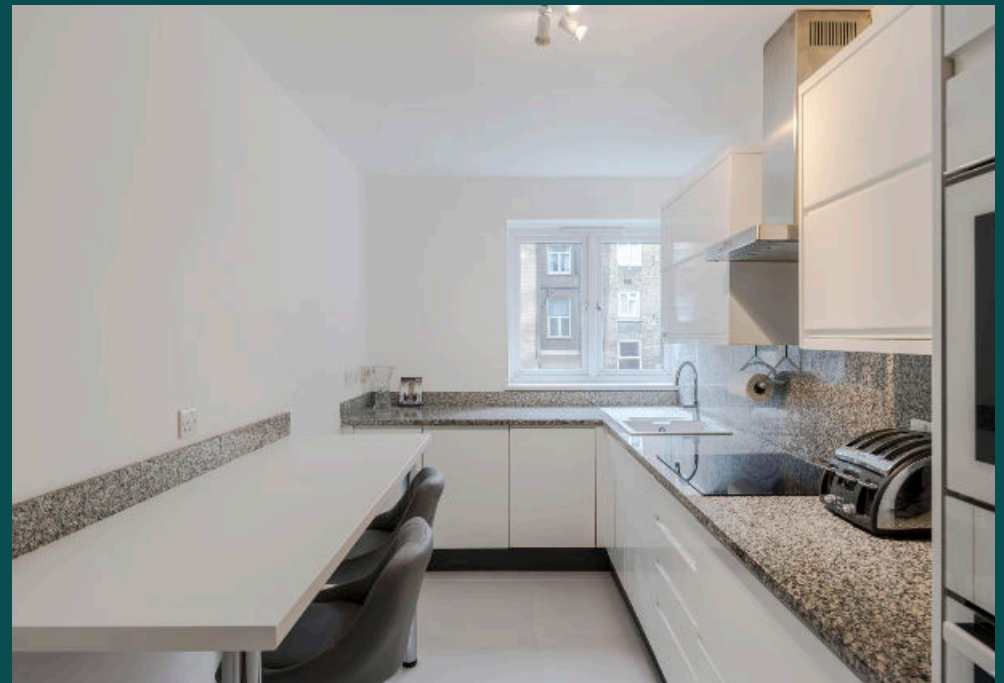


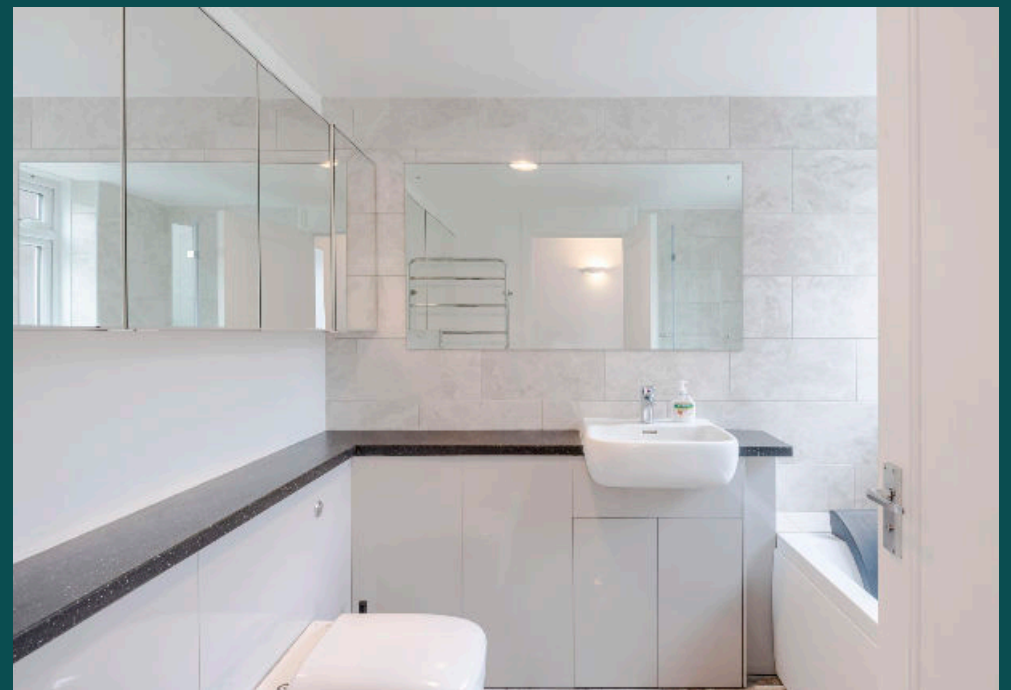
Location:

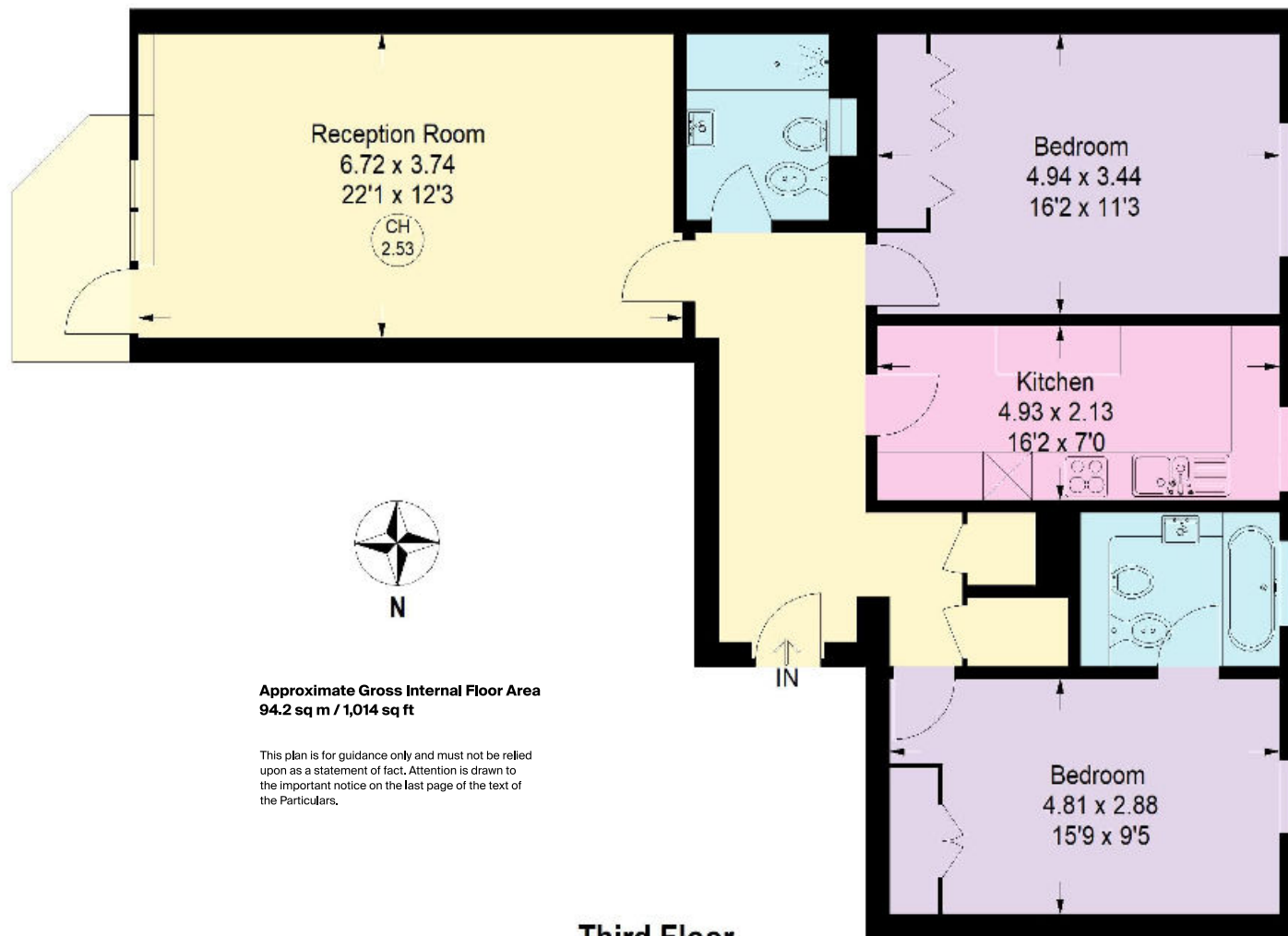
Porchester Terrace is a residential road situated moments from the open spaces of Hyde Park and the many shopping amenities of Queensway. The nearest underground stations include Queensway (Central line) and Bayswater (Circle and District line).

Paddington mainline (Heathrow Express and Network Rail) and underground (Circle, District, Bakerloo and Hammersmith and City lines) station is within easy reach.

Porchester Terrace is also perfectly positioned for the imminent arrival of Crossrail which will offer faster journey times into the City and Canary Wharf.







Knight Frank
Hyde Park
1 Craven Terrace
London
W2 3QD
[knightfrank.co.uk](https://www.knightfrank.co.uk)

We would be delighted to tell you more
Tim Perks
020 7871 5065
tim.perks@knightfrank.com



Fixtures and fittings: A list of the fitted carpets, curtains, light fittings and other items fixed to the property which are included in the sale (or may be available by separate negotiation) will be provided by the Seller's Solicitors.

Important Notice: 1. Particulars: These particulars are not an offer or contract, nor part of one. You should not rely on statements by Knight Frank LLP in the particulars or by word of mouth or in writing ("information") as being factually accurate about the property, its condition or its value. Neither Knight Frank LLP nor any joint agent has any authority to make any representations about the property, and accordingly any information given is entirely without responsibility on the part of the agents, seller(s) or lessor(s). 2. Photos, Videos etc: The photographs, property videos and virtual viewings etc. show only certain parts of the property as they appeared at the time they were taken. Areas, measurements and distances given are approximate only. 3. Regulations etc: Any reference to alterations to, or use of, any part of the property does not mean that any necessary planning, building regulations or other consent has been obtained. A buyer or lessee must find out by inspection or in other ways that these matters have been properly dealt with and that all information is correct. 4. VAT: The VAT position relating to the property may change without notice. 5. To find out how we process Personal Data, please refer to our Group Privacy Statement and other notices at <https://www.knightfrank.com/legals/privacy-statement>. Particulars dated April 2022. Photographs and videos dated April 2022.

Knight Frank is the trading name of Knight Frank LLP. Knight Frank LLP is a limited liability partnership registered in England and Wales with registered number OC305934. Our registered office is at 55 Baker Street, London W1U 8AN where you may look at a list of members' names. If we use the term 'partner' when referring to one of our representatives, that person will either be a member, employee, worker or consultant of Knight Frank LLP and not a partner in a partnership. If you do not want us to contact you further about our services then please contact us by either calling 020 3544 0692, email to marketing.help@knightfrank.com or post to our UK Residential Marketing Manager at our registered office (above) providing your name and address.