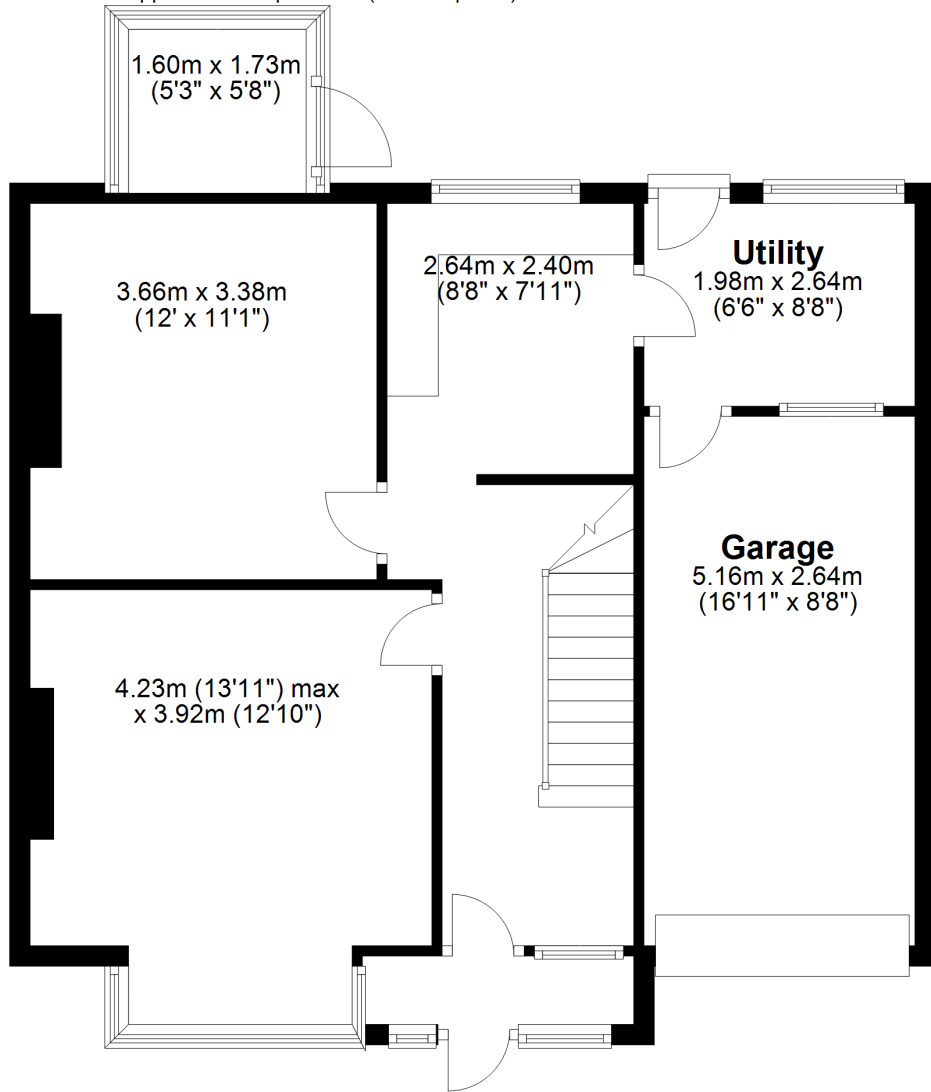


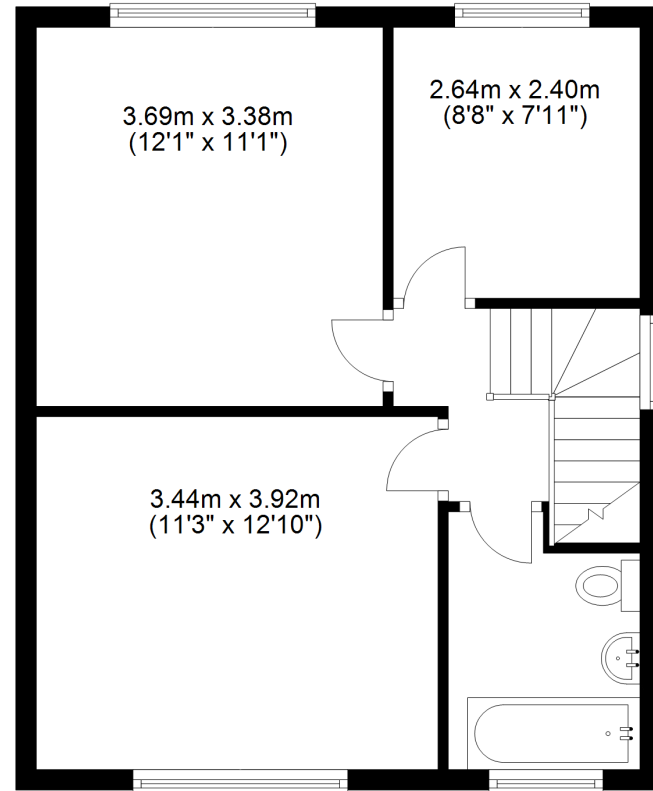
Ground Floor

Approx. 69.1 sq. metres (743.4 sq. feet)



First Floor

Approx. 42.5 sq. metres (458.0 sq. feet)



Total area: approx. 111.6 sq. metres (1201.4 sq. feet)

Measurements are approximate. Not to Scale. Illustrative purposes only.
Plan produced using PlanUp.

95 Hillingdon Road