

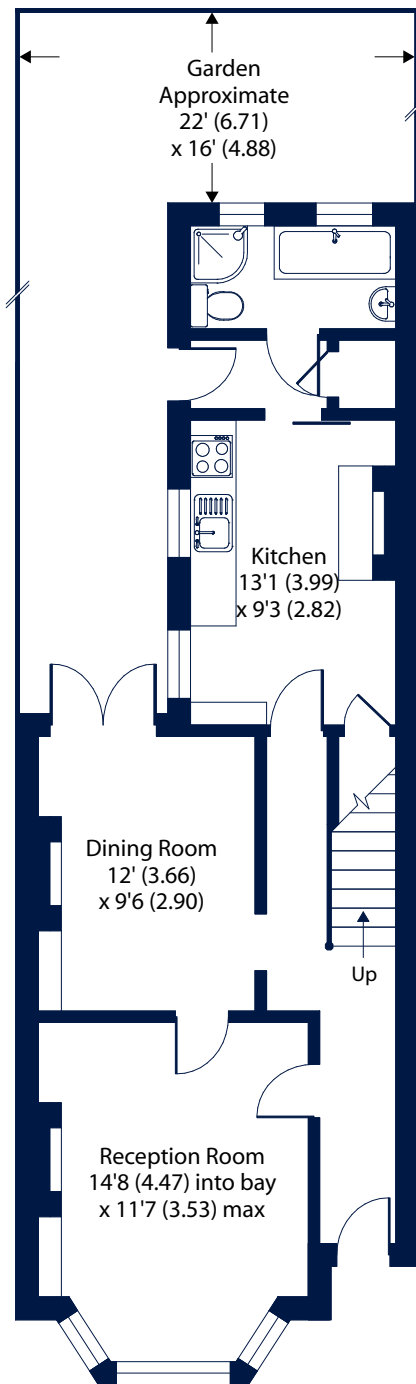


Warwick Road, Kingston Upon Thames, KT1

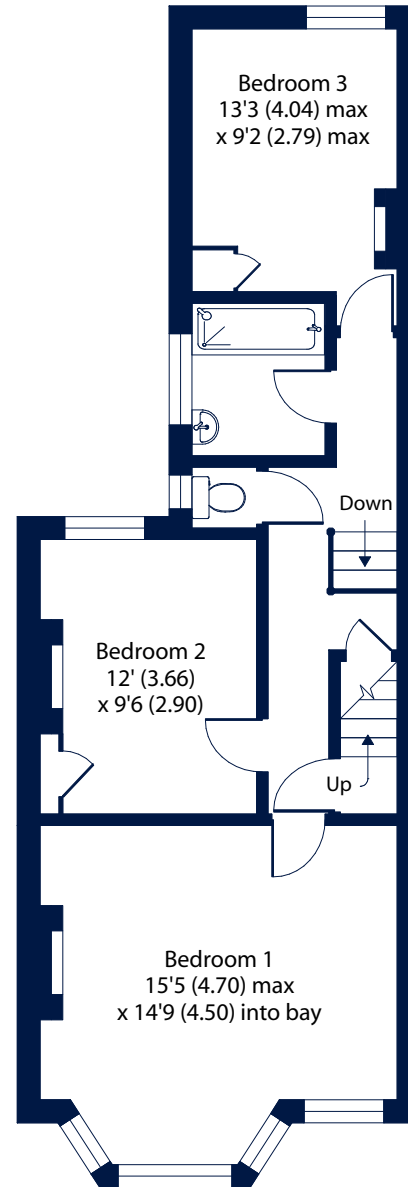
Approximate Area = 1446 sq ft / 134.3 sq m (includes limited use area)

For identification only - Not to scale

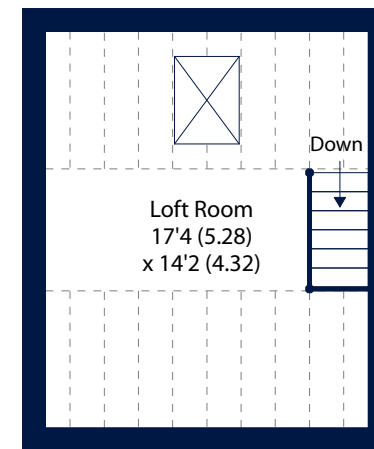
Denotes restricted head height



GROUND FLOOR



FIRST FLOOR



SECOND FLOOR



Floor plan produced in accordance with RICS Property Measurement Standards incorporating International Property Measurement Standards (IPMS2 Residential). © nīche.com 2023. Produced for Romans. REF: 1192655

