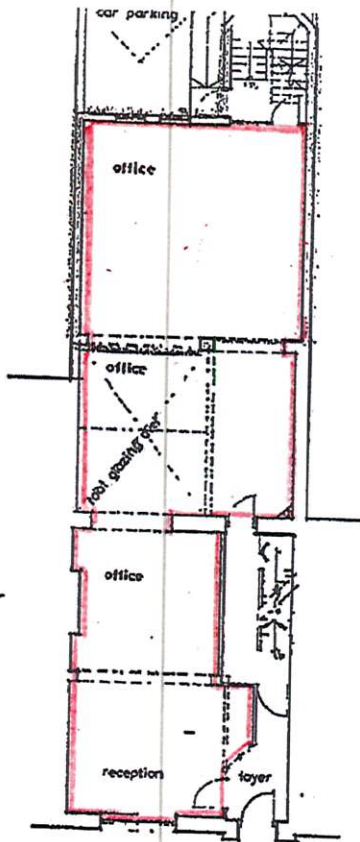
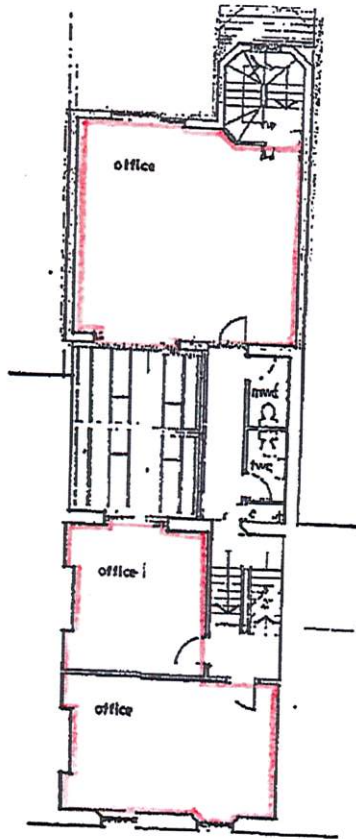


basement  
(67m<sup>2</sup>, 721 ft<sup>2</sup>)

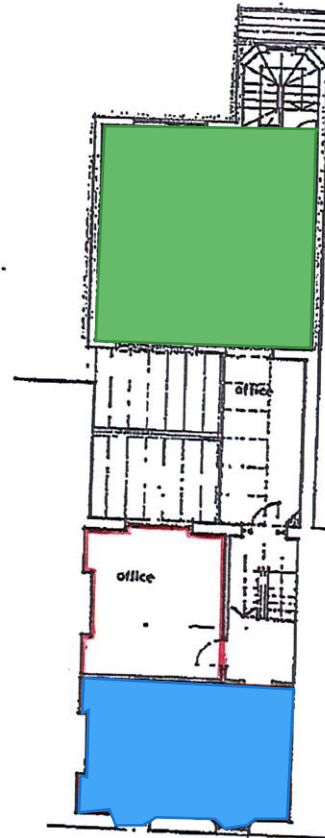
Total nett useable floor area = 401m<sup>2</sup> (4318 ft<sup>2</sup>)



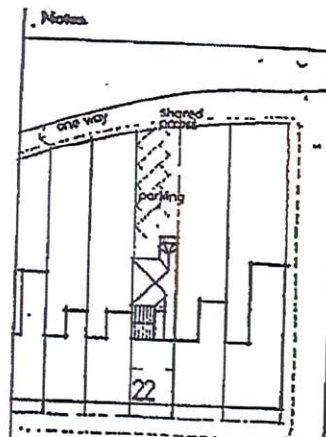
ground  
(130m<sup>2</sup>, 1399 ft<sup>2</sup>)



1022  
first  
(95m<sup>2</sup>, 1027 ft<sup>2</sup>)



second  
(109m<sup>2</sup>, 1173 ft<sup>2</sup>)



Windsor Place  
Site plan 1:500

No.	Date	Revisions

Notes:  
All dimensions must be checked on site, do not scale from this drawing, but use written dimensions. If in doubt - ASK.

Job Title  
22 Windsor Place,  
Cardiff.  
for  
NATIONAL DEPOSIT FRIENDLY SOCIETY

Drawing Title  
proposed floor plans

**JOHN MILLS ASSOCIATES**  
CHARTERED ARCHITECTS  
 23 PRINCESS WILTON GARDENS  
 BOSTON 456 400 0273 731234

date AUGUST '92 scale 1:100 dwt JSW

Dep. No. 9221 : A2 : 1

NOT TO SCALE