

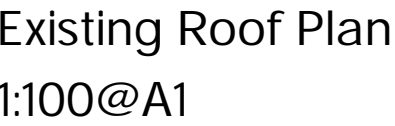
©This drawing is copyright of Condy and Lofthouse Ltd. and may not be reproduced in any way without their specific permission.

All dimensions are to be checked on site. Do not scale from this drawing, work to figured dimensions only. Any queries please contact condy@lofthousearchitects.co.uk

Materials prohibited from use, except where used in accordance with 'Good Practice in the Selection of Construction Materials (March 2011)' or unless required by the Contract:

- a) all alumina cement in the structural elements;
- b) Portland cement in permeable concrete;
- c) calcium chloride admixtures for use in reinforced concrete;
- d) asbestos or asbestos-containing products, as defined in the Contract of Asbestos and World Bank's amended 2012 or any other statutory modification or re-enactment thereof;
- e) any naturally occurring or man made mineral fibres (for example, rock-wool or glass-wool) in any form, including but not limited to, in the form of blankets or, less, unless they are appropriately sealed to prevent migration of fibres;
- f) aggregates for use in reinforced concrete which do not comply with BS EN 12620:2002 or BS EN 12620:2002+A1:2006 or BS EN 12620:2002+A2:2009; Properties of aggregates used in concrete with BS EN 12620:2002 (Part 1 & 2) properties of lightweight aggregates;
- g) concrete containing admixtures which contain substances in all about content in BRE Digest 338 (1984) & 'Concrete Society Technical Report 303'.
- h) lead, lead paint or any other materials containing lead which can be ingested, inhaled or absorbed, or which may be released from the material. Lead is specifically required in drinking water pipework by any relevant statutory provisions and any such pipework or other lead roof structures are specifically provided for in the Contract;
- i) urea formaldehyde foam or materials which may release formaldehyde in the form of gas, which may be hazardous with reference to the limits set by the Health and Safety Executive;
- j) calcium silicate bricks or tiles;
- k) any product containing isocyanates as being fibre-free, calcium silicate bricks or tiles;
- l) any products containing calcium referred to in Statutory Instrument 1819 (2006) (Control of dangerous substances and preparations: Regulations 2006. Reference should also be made to HSE DSE1008 Calcium and urea);
- m) any new timber treated with pentachlorophenol;
- n) any concrete or masonry structure for use for building elements particularly susceptible to corrosion;
- o) concrete used in circumstances where it is susceptible to alkali-silica reaction;
- p) solvent based paints except where water based paints are unsuitable for reasons of health and safety;
- q) any new materials not in accordance with statutory requirements, British Standards, Codes of Practice and good building practice current at the state of completion of the relevant materials into the Works or the specifications thereof.

XXX



Survey information provided by:
Chris Partington Land Surveyors
44a Green Lane
Sale
Cheshire
M33 5PP
Ref: 230120WW-02

AeJ 01-12-2023

condylofthouse
architects

Almonds Green Developments Ltd.

11-15 Rodney Street, Liverpool. L1 9EF
4-5 Baltimore Street, Liverpool, L1 9BD

Title

Existing Third Floor and Roof Plans

Sca

1:10

.....

RVEY/JS

FOR APPROVAL

Unit 17 Connect Business Village
24 Derby Road
Liverpool L5 9PR

0151 207 4371
info@condylofthouse.co.uk
www.condylofthouse.co.uk