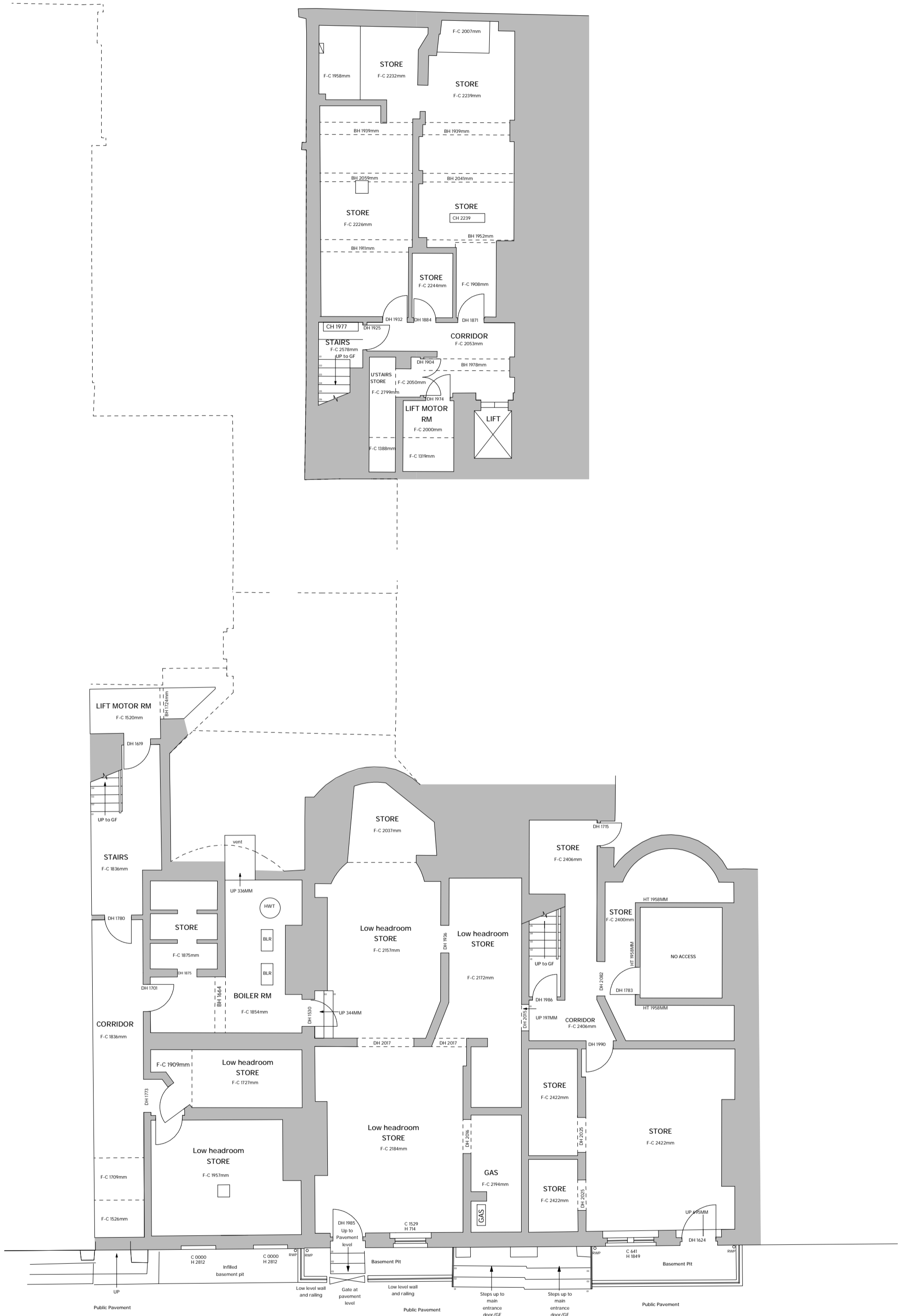
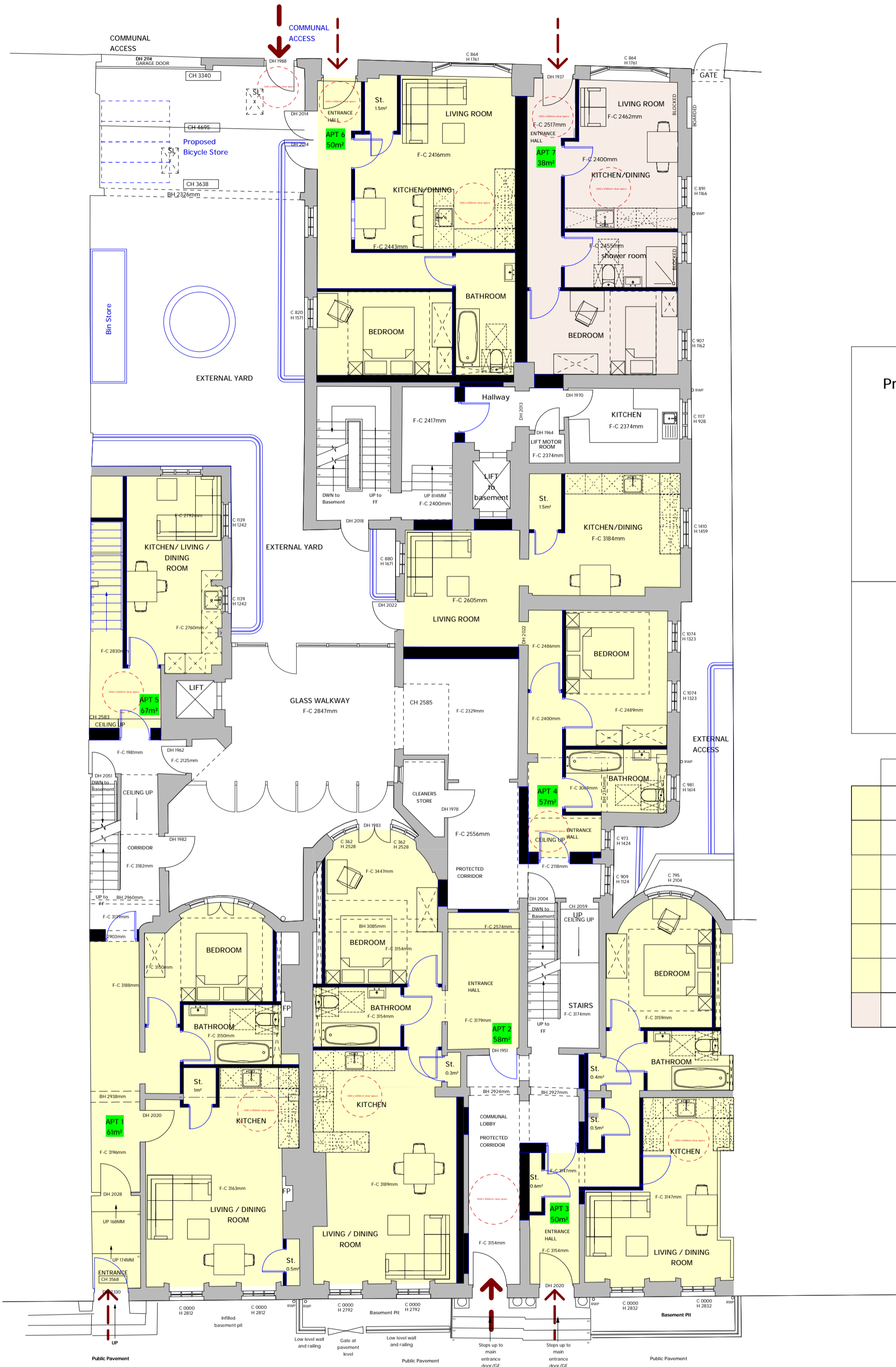


Retained Existing Basement Floor Plan
1:100@A1



Proposed Ground Floor Plan
1:100@A1



Proposed Schedule of Accomodation			
2N ^o . 2 bedroom Studios			
10N ^o . 1 bedroom Apartments			
2N ^o . 2 bedroom Apartments			
3N ^o . 3 bedroom Apartment			
Total 17N ^o . Apartments			
Proposed Accommodation Split			
<div><div></div> 1 bedrooms 70.5%</div> <div><div></div> 2 bedrooms 11.7%</div> <div><div></div> 3 bedrooms 17.6%</div>			
Apt No.	Type	Area	NDSS
No 1	1b2p	61m ²	Yes
No 2	1b2p	58m ²	Yes
No 3	1b2p	50m ²	Yes
No 4	1b2p	57m ²	Yes
No 5	1b2p	67m ²	Yes
No 6	1b2p	50m ²	Yes
No 7	1b1p	38m ²	Yes

Notes

* This drawing is copyright of Condyl and Lofthouse Ltd and may not be reproduced in any way without their specific permission.

All dimensions are to be checked on site. Do not scale from this drawing, work to figured dimensions only. Any queries please contact condyl lofthouse architects.

- Materials Prohibited
- Materials prohibited from use, except where used in accordance with 'Good Practice in the Selection of Construction Materials (March 2017)' or unless required by the Contract.
- a) high alumina cement in the structural elements;
 - b) wood wool slabs in permanent formwork to concrete;
 - c) calcium chloride admixtures for use in reinforced concrete;
 - d) asbestos or asbestos-containing products, as defined in the 'Control of Asbestos at Work Regulations, as amended 2012' or any other statutory modification or re-enactment thereof;
 - e) any naturally occurring or man made mineral fibres (for example, rock-wool or slag wool) with a thickness of 3 microns or less and a length of 200 microns or less, unless they are appropriately sealed to prevent migration of fibres;
 - f) aggregates for use in reinforced concrete which do not comply with: BS EN 12620:2002: properties of aggregates used in concrete; BS EN 1399:2002: Properties of aggregates used in mortar; BS EN 12655 (Parts 1 & 2): properties of lightweight aggregates. Guidance on avoiding alkali-silica reaction and limitations on alkali content in BRE Digest 330 (2004) & Concrete Society Technical Report 30 (1999);
 - g) lead, lead paint or any other materials containing lead which may be ingested, inhaled or absorbed, except where copper alloy fittings also containing lead are specifically required in drinking water pipework by any relevant statutory requirement or where lead flashings or other lead roof coverings are specifically provided for in the Contract;
 - h) urea formaldehyde foam or materials which may release formaldehyde in quantities which may be hazardous with reference to the limits set by the Health and Safety Executive;
 - i) calcium silicate bricks or tiles;
 - j) vermiculite unless it is established as being fibre-free; calcium silicate bricks or tiles;
 - k) any products containing cadmium referred to in Statutory Instrument 'SI 2004/2311: Controls on dangerous substances and preparations Regulations 2006'. Reference should also be made to 'HSE, EDG39: Cadmium and you';
 - l) any new timber treated with pentachlorophenol;
 - m) non galvanneal mild steel structural fixings for building elements particularly susceptible to erosion;
 - n) concrete used in circumstances where it is susceptible to alkali/silica reaction;
 - o) materials containing chlorofluorocarbons (CFC's);
 - p) solvent based paints except where water based paints are unsuitable for unavailability;
 - q) any new materials not in accordance with statutory requirements, British Standards, Codes of Practice and good building practice current at the date of incorporation of the relevant materials into the Works or the specifications thereof.

Additional Notes

XXXX

Survey information provided by:
Chris Partington Land Surveyors
44a Green Lane
Sale
Cheshire
M33 5PP
Ref: 230120WW-02

* First Issue Ae.J 01-12-2023



Client
Almonds Green Developments Ltd.

Project
11-15 Rodney Street, Liverpool, L1 9EF
4-5 Baltimore Street, Liverpool, L1 9BD

Title
Proposed Basement and Ground Floor Plans

Scale Date Drawn By
1:100@A1 Dec 2023 DB

Drawing No Revision
23-089-30 X

FOR APPROVAL