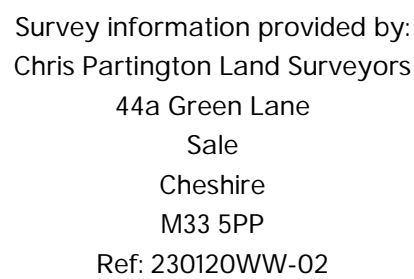
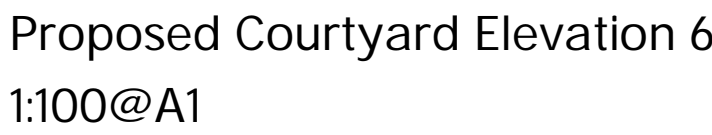
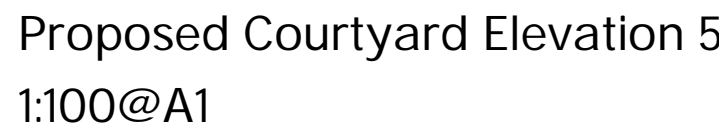


©This drawing is copyright of Condy and Lofthouse Ltd. and may not be reproduced in any way without their specific permission.

All dimensions are to be checked on site. Do not scale from this drawing, work to figured dimensions only. Any queries please contact condy@lofthousearchitects.co.uk

Materials prohibited from use, except where used in accordance with 'Good Practice in the Selection of Construction Materials (March 2011)' or unless required by the Contract:

- ### Additional Notes



AeJ 01-12-2023

Almonds Green Developments Ltd.

11-15 Rodney Street, Liverpool. L1 9EF
4-5 Baltimore Street, Liverpool, L1 9B

Proposed Elevations 5-8

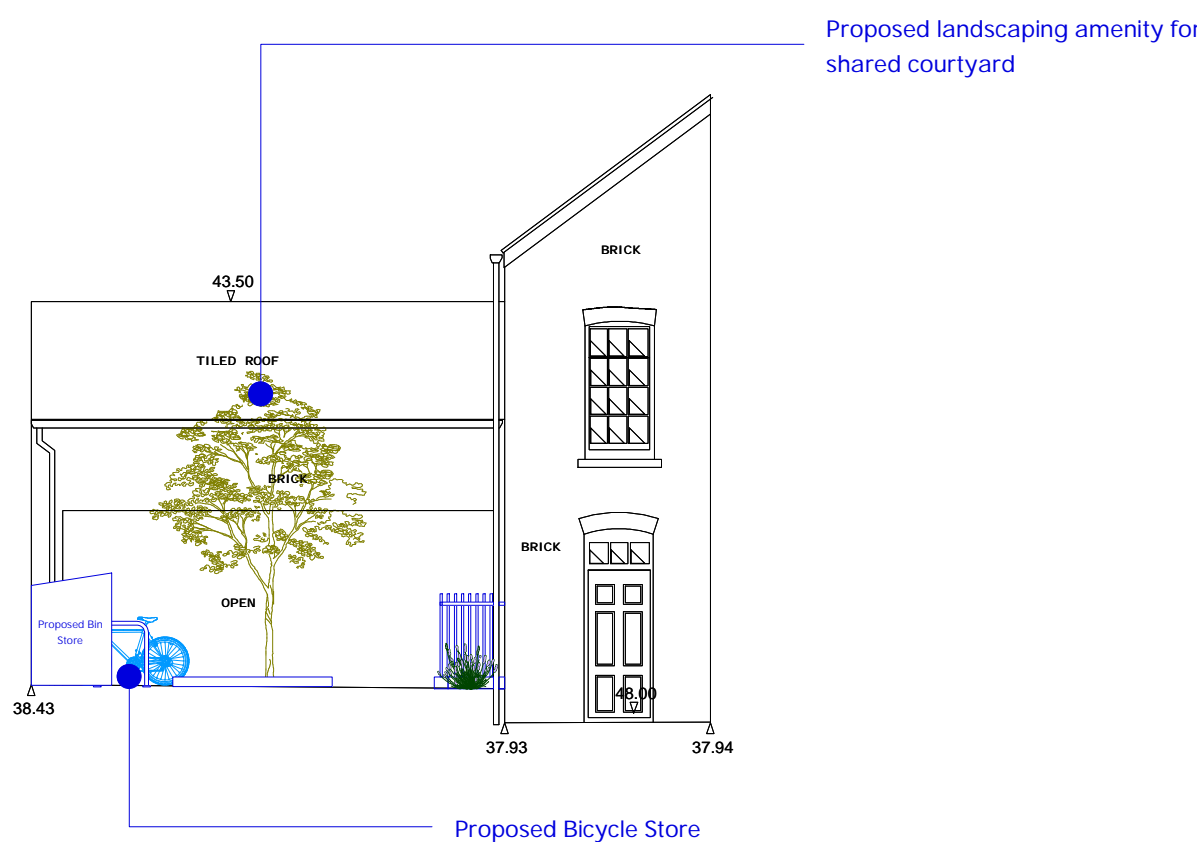
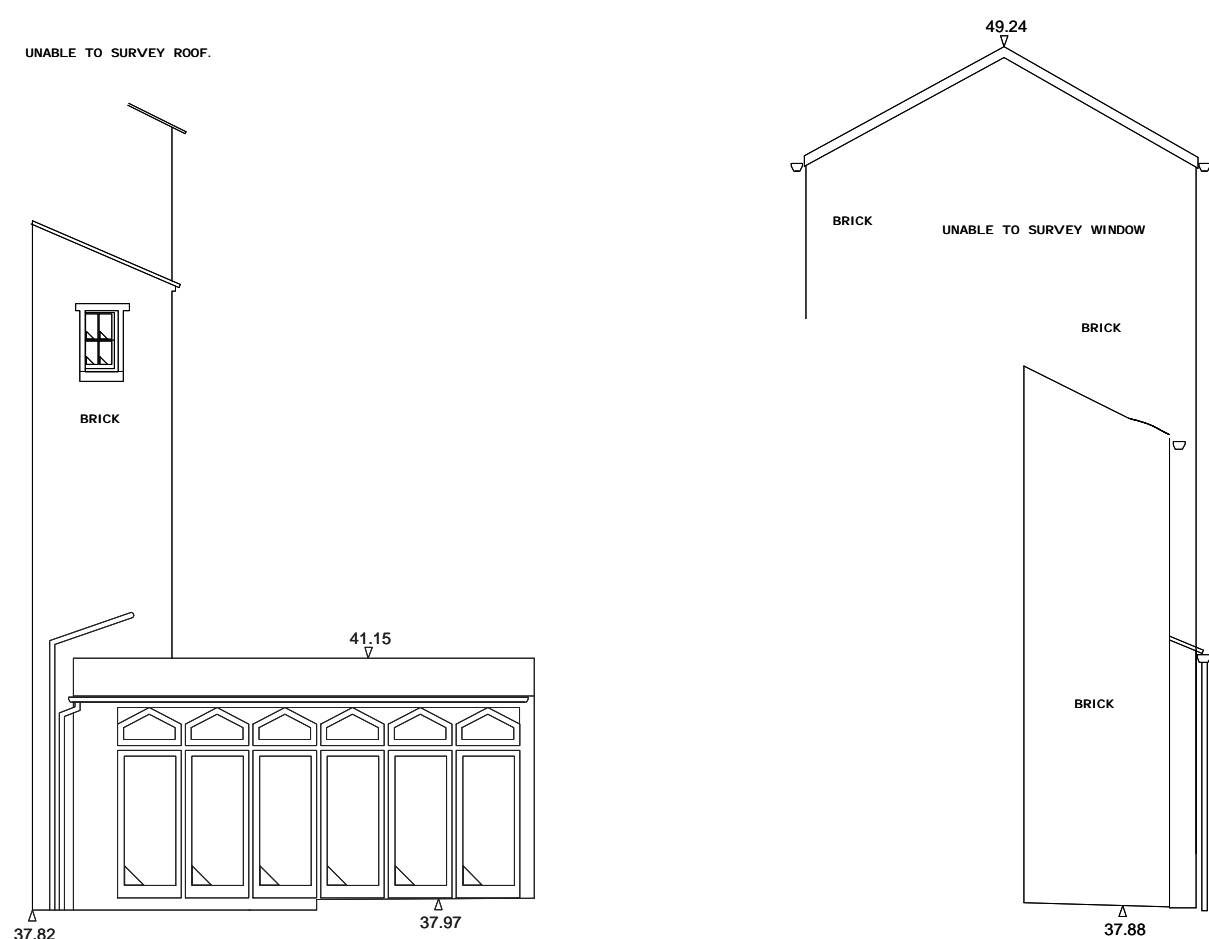
Date _____ Drawn By _____

Dec 2023 JS

REVISION

Unit 17 Connect Business Village
24 Derby Road
Liverpool L5 9PR

0151 207 4371
info@condyloftshouse.co.uk
www.condyloftshouse.co.uk



Proposed Courtyard 7
1:100@A1

Proposed Courtyard Elevation 8
1:100@A1